



US00D667226S

(12) **United States Design Patent**
Levy

(10) **Patent No.:** **US D667,226 S**

(45) **Date of Patent:** **** Sep. 18, 2012**

(54) **APPLIQUE**

(75) Inventor: **Jacob Sai Levy**, Dillon, CO (US)

(73) Assignee: **Phunkshun Wear, LLC**, Silverthorne, CO (US)

(**) Term: **14 Years**

(21) Appl. No.: **29/401,215**

(22) Filed: **Sep. 8, 2011**

(51) **LOC (9) Cl.** **05-04**

(52) **U.S. Cl.** **D5/63**

(58) **Field of Classification Search** D5/4, 7, D5/11, 43, 47, 50, 53-57, 61-63, 99; D6/582, D6/602, 612, 613, 617, 622; D24/124-126; D32/40; 4/581; 5/402, 490, 495; 15/208, 15/215; 112/401, 402; 139/383 B, 383 R, 139/416, 420 B, 420 R, 428; 162/111, 116, 162/134, 140, 416; 245/2; 428/32, 37, 39, 428/57, 66.5, 79, 85, 181, 221, 542.6; 442/181, 442/320, 327; 604/385.01; D14/489; D18/24; D20/11

See application file for complete search history.

(56) **References Cited**

U.S. PATENT DOCUMENTS

D50,302 S *	2/1917	Hanson	D5/63
D50,303 S *	2/1917	Hanson	D5/63
D80,326 S *	1/1930	Ley	D9/435
D93,913 S *	11/1934	Damme	D18/24
D207,711 S *	5/1967	Rigby et al.	D11/95
D242,186 S *	11/1976	Lengyel	D20/40

D420,383 S *	2/2000	Lommer	D18/25
D458,716 S *	6/2002	Barrett	D29/123
D533,562 S *	12/2006	Sundeby	D14/490
D538,350 S *	3/2007	Lorenzen	D20/22
D565,202 S *	3/2008	Hansen	D25/138
D608,820 S *	1/2010	Sak	D18/24
2011/0126343 A1 *	6/2011	Tualla et al.	2/209.13

* cited by examiner

Primary Examiner — Karen S Acker

(74) *Attorney, Agent, or Firm* — Margaret Polson; Oppedahl Patent Law Firm LLC

(57) **CLAIM**

The ornamental design for an applique, as shown and described.

DESCRIPTION

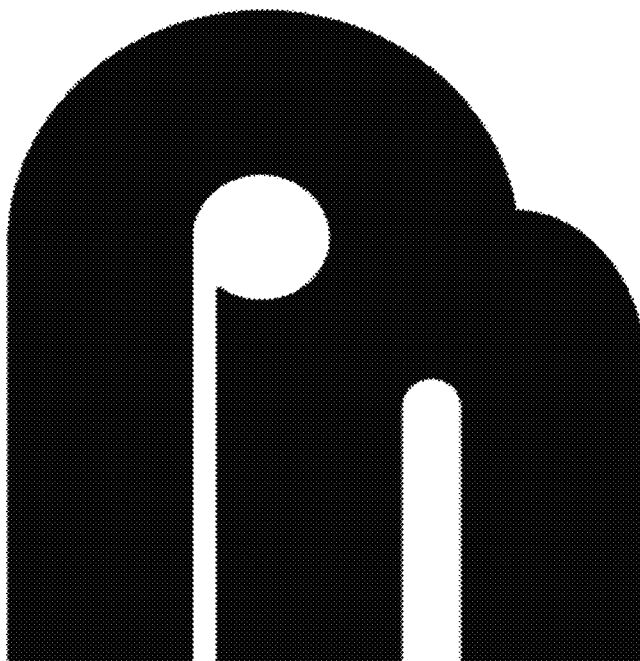
FIG. 1 is a front side elevation view of my new design for an applique.

FIG. 2 is a reduced perspective view of FIG. 1 shown in an environment of use. The broken lines represent environmental matter and form no part of the claimed design.

FIG. 3 is a reduced perspective view of FIG. 1 shown in a second environment of use. The broken lines represent environmental matter and form no part of the claimed design; and, FIG. 4 is a reduced perspective view of FIG. 1 shown in a third environment of use. The broken lines represent environmental matter and form no part of the claimed design.

The solid black surface shading represents color contrast. Color and the thickness of the applique form no part of the claimed design. The logo forming part of the claimed design is a trademark of Phunkshun Wear, LLC.

1 Claim, 2 Drawing Sheets



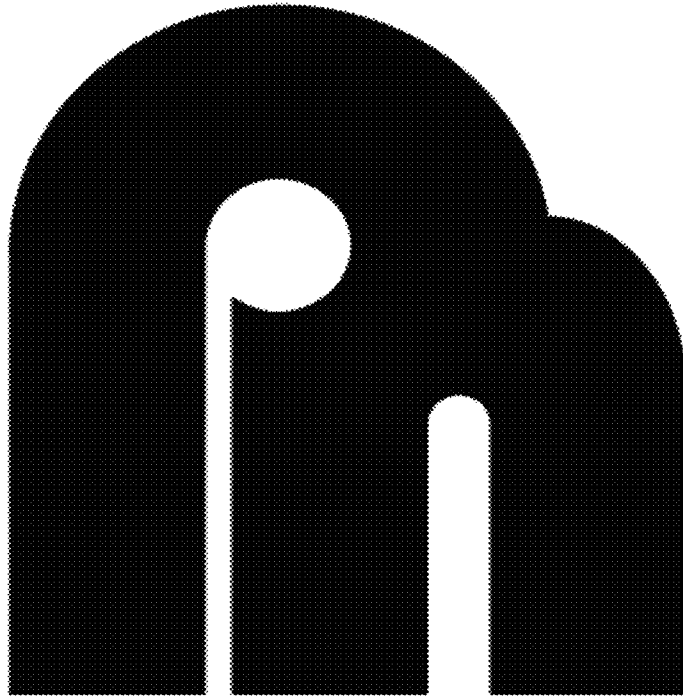


FIG. 1

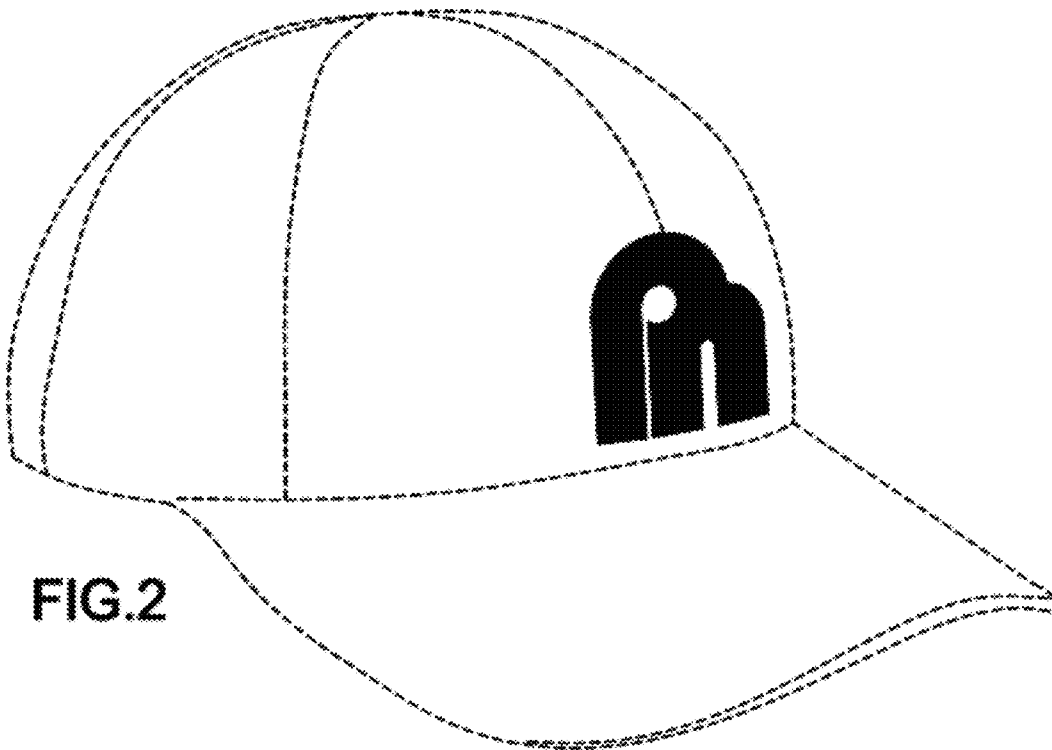


FIG. 2

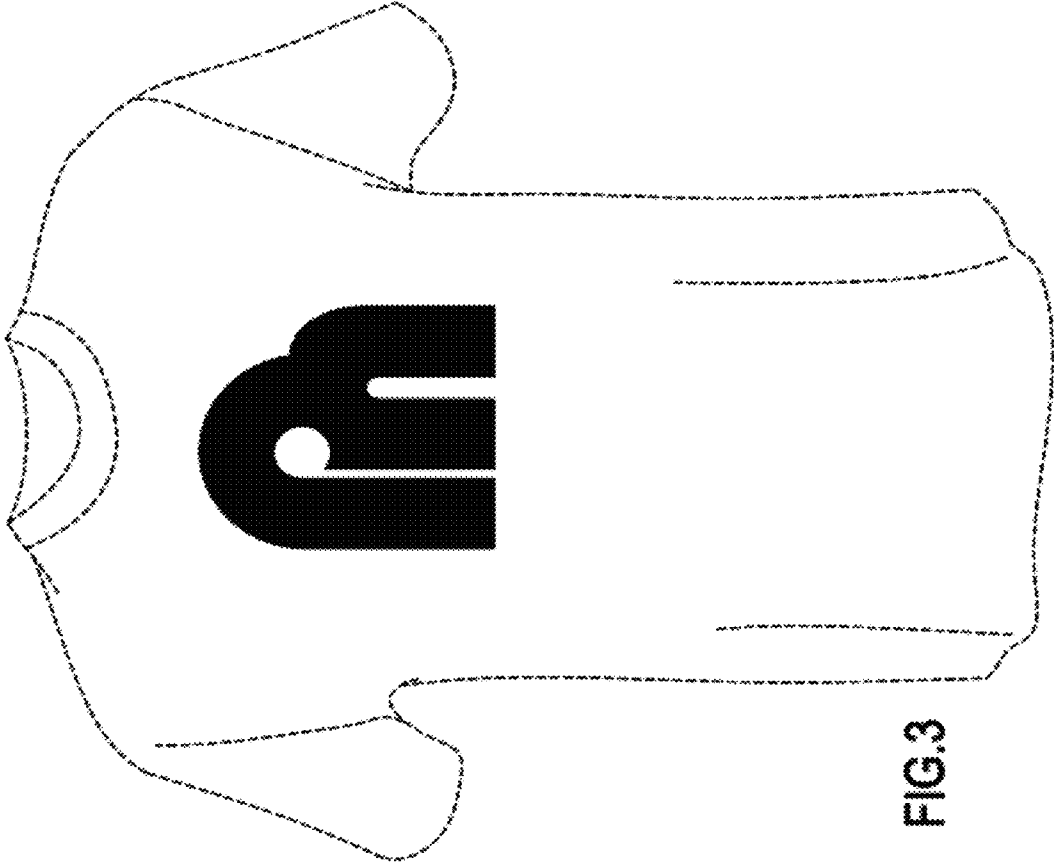


FIG.3

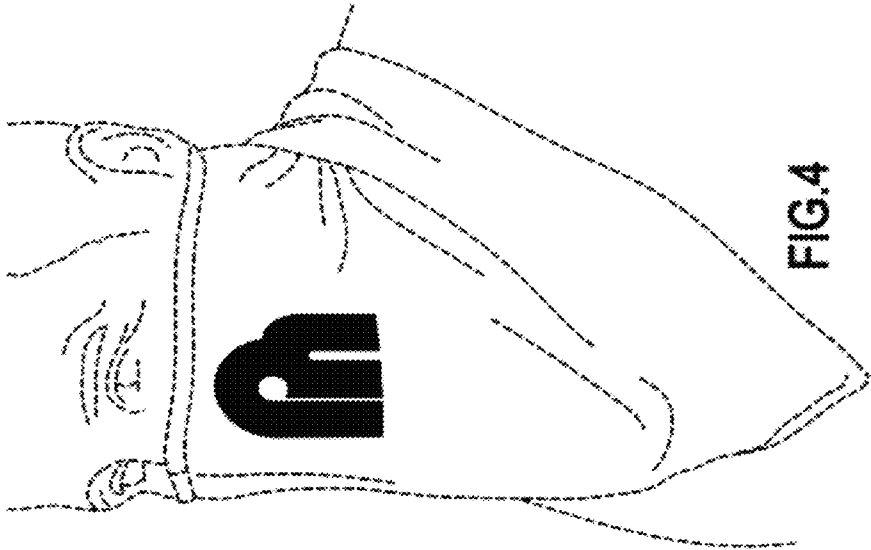


FIG.4