



US008787482B2

(12) **United States Patent**  
**Jiao et al.**

(10) **Patent No.:** **US 8,787,482 B2**  
(45) **Date of Patent:** **Jul. 22, 2014**

(54) **METHOD AND SYSTEM FOR SELECTING PRE-CODING MATRIX IN CLOSED LOOP MULTI-INPUT MULTI-OUTPUT SYSTEM**

(75) Inventors: **Li Jiao**, Shenzhen (CN); **Chunfeng Yao**, Shenzhen (CN); **Juan Zhang**, Shenzhen (CN)

(73) Assignee: **ZTE Corporation**, Shenzhen (CN)

(\*) Notice: Subject to any disclaimer, the term of this patent is extended or adjusted under 35 U.S.C. 154(b) by 84 days.

(21) Appl. No.: **13/635,905**

(22) PCT Filed: **May 13, 2010**

(86) PCT No.: **PCT/CN2010/072747**

§ 371 (c)(1),  
(2), (4) Date: **Sep. 18, 2012**

(87) PCT Pub. No.: **WO2011/116542**

PCT Pub. Date: **Sep. 29, 2011**

(65) **Prior Publication Data**

US 2013/0010896 A1 Jan. 10, 2013

(30) **Foreign Application Priority Data**

Mar. 22, 2010 (CN) ..... 2010 1 0134216

(51) **Int. Cl.**  
**H04B 7/02** (2006.01)  
**H04B 7/04** (2006.01)  
**H04L 1/00** (2006.01)  
**H04B 7/06** (2006.01)

(52) **U.S. Cl.**  
CPC ..... **H04B 7/0456** (2013.01); **H04B 7/0417** (2013.01); **H04L 1/0003** (2013.01); **H04L 1/0009** (2013.01); **H04B 7/0639** (2013.01); **Y02B 60/31** (2013.01)  
USPC ..... **375/267**

(58) **Field of Classification Search**  
CPC .. H04B 7/0417; H04B 7/0456; H04B 7/0639; H04L 1/0003; H04L 1/0009; Y02B 60/31  
USPC ..... 375/260, 267, 285, 295, 296, 299; 370/204, 252, 328, 329  
See application file for complete search history.

(56) **References Cited**

U.S. PATENT DOCUMENTS

2008/0075027	A1	3/2008	Lee et al.	
2008/0232503	A1*	9/2008	Kim	375/267
2010/0103810	A1*	4/2010	Kloos et al.	370/204
2010/0254474	A1*	10/2010	Gomadani et al.	375/267
2011/0149765	A1*	6/2011	Gorokhov et al.	370/252
2011/0268067	A1*	11/2011	Seo et al.	370/329
2012/0057657	A1*	3/2012	Khojastepour et al.	375/340

FOREIGN PATENT DOCUMENTS

CN	1933609	A	3/2007	
CN	101207461	A	6/2008	
CN	101346903	A	1/2009	
CN	101453259	A	6/2009	
CN	101510820	A	8/2009	
CN	101651533	A	2/2010	
JP	2008543215	A	11/2008	
JP	2009111781	A	5/2009	
JP	2009189007	A	8/2009	
JP	2010501136	A	1/2010	
WO	2008096997	A2	8/2008	
WO	2009023681	A2	2/2009	
WO	2009120048	A2	10/2009	

OTHER PUBLICATIONS

International Search Report on international application No. PCT/CN2010/072747, mailed on Dec. 30, 2010.

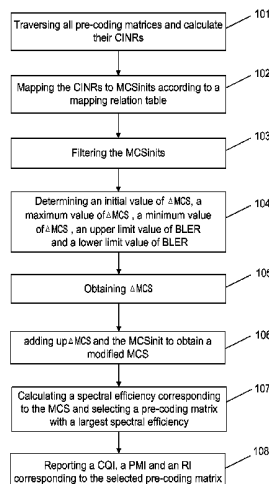
English Translation of the Written Opinion of the International Search Authority in international application No. PCT/CN2010/072747, mailed on Dec. 30, 2010.

\* cited by examiner

*Primary Examiner* — Sam K Ahn

*Assistant Examiner* — Syed Haider

(74) *Attorney, Agent, or Firm* — Oppedahl Patent Law Firm LLC



(57)

**ABSTRACT**

A method and a system for selecting a pre-coding matrix in a closed loop MIMO system are provided. The method includes: traversing all pre-coding matrices and respectively calculating a CINR corresponding to each pre-coding matrix; and obtaining an MCS according to a CINR corresponding to a pre-coding matrix, calculating a spectral efficiency corresponding to the MCS, and selecting a pre-coding matrix with a largest spectral efficiency. According to the method and system provided by the present disclosure, an appropriate

pre-coding matrix can be selected. By using the appropriate pre-coding matrix in the closed loop MIMO system, the channel quality, the throughput of a closed loop multiplexing system in the scenario that the channel changes slowly, and the gain can be improved. Besides, the method of the present disclosure can avoid calculation of the BER formula on the premise of a large number of assumptions, and reduce the computation complexity.

**11 Claims, 2 Drawing Sheets**

Fig. 1

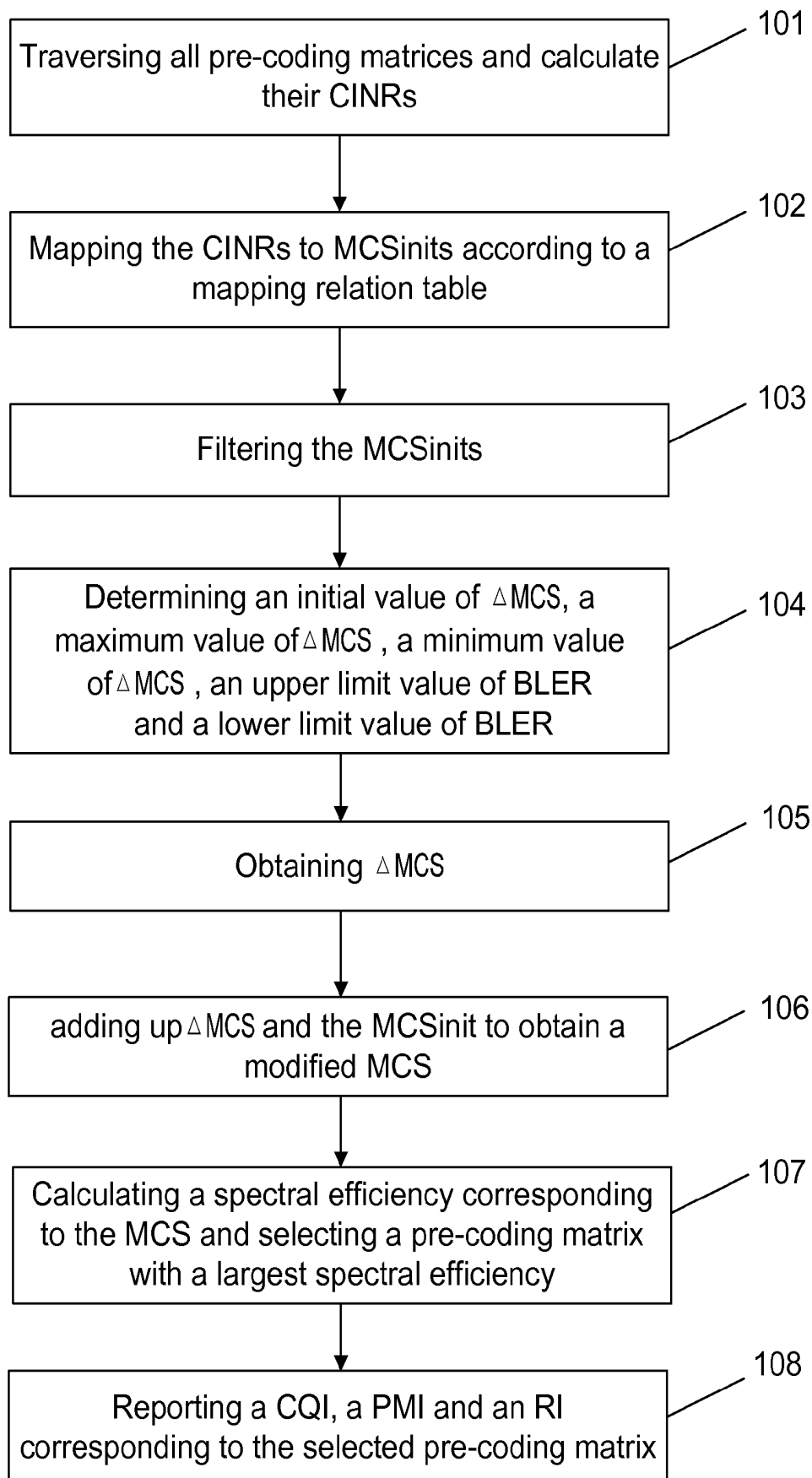
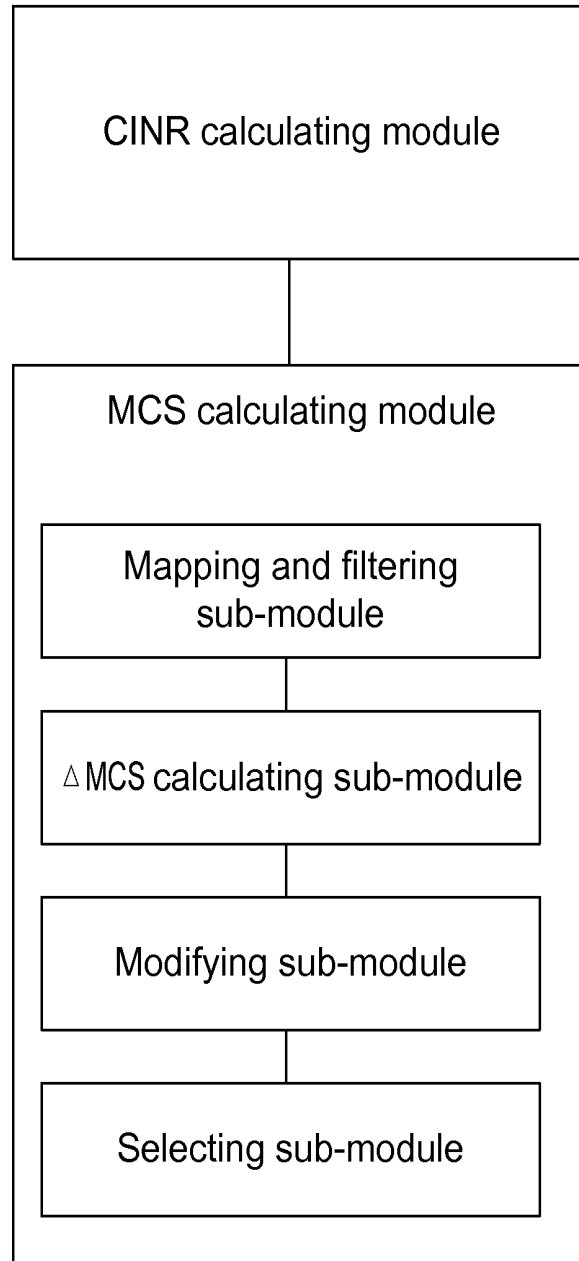


Fig. 2



# METHOD AND SYSTEM FOR SELECTING PRE-CODING MATRIX IN CLOSED LOOP MULTI-INPUT MULTI-OUTPUT SYSTEM

## TECHNICAL FIELD

The present disclosure relates to the field of communications, and more particularly to a method and a system for selecting a pre-coding matrix in a closed loop Multi-Input Multi-Output (MIMO) system.

## BACKGROUND

MIMO is one of the most important technologies for realizing a high data rate required in a radio data system. Data streams can be transmitted via MIMO so as to improve the system throughput. Currently, MIMO is applied to most 3G and 4G radio standards, e.g. World interoperability for Microwave Access (WiMAX) technology, Time Division-Synchronous Code Division Multiple Access (TD-SCDMA) and Long Term Evolution (LTE) technology.

The transmission schemes of the MIMO system are mainly classified as two types: open-loop MIMO system and closed-loop MIMO system. A closed-loop MIMO system feeds channel information at a receiver back to a transmitter and then performs operations such as pre-coding and beam-forming on the transmission data. But reciprocating communication is not performed by a receiver and a transmitter in an open-loop MIMO system, thus channel information cannot be fully utilized. In a scenario that a channel changes slowly, a closed-loop pre-coding MIMO system needs to improve the system performance by using the feedback channel information. Since a feedback link occupies the system overhead, in a practical system, a partial feedback technology is used to allocate a limited feedback channel between a mobile phone and a base station to feed back important information of the channel and realize multiplexing technology. In order to reduce the signaling overhead of a reverse link and the feedback information of a pre-coding system, an LTE system adopts a codebook-based pre-coding technology to improve the spectral efficiency of a system. For an LTE closed-loop MIMO system, a pre-coding matrix and a corresponding index value are specified in a protocol. A receiver selects an optimal pre-coding matrix according to a certain criterion and feeds a Precoding Matrix Indicator (PMI) back to a transmitter which then obtains the pre-coding matrix according to the PMI and performs pre-coding on transmission signals.

Criteria for estimating PMI in the existing closed-loop MIMO system include the Minimum Mean Squared Error (MMSE) matrix trace criterion, the maximum channel capacity criterion and the optimal Bit Error Rate (BER) selection criterion etc.

In a non-singular case, the gain of a closed loop is not large than that of an open loop according to the MMSE matrix trace criterion; a calculated theoretical channel capacity can not be actually achieved and there is no gain in the Frame Error Rate (FER) performance according to the maximum channel capacity criterion; while the optimal BER selection criterion is equivalent to the maximum throughput criterion and has a shortcoming that its calculation formula is obtained on the premise of a large number of assumptions. Therefore, the existing pre-coding matrix selecting methods have some disadvantages.

## SUMMARY

The present disclosure provides a method for selecting a pre-coding matrix in a closed loop MIMO system, which is able to select an appropriate pre-coding matrix.

The present disclosure adopts the following technical solution:

According to an aspect, the present disclosure discloses a method for selecting a pre-coding matrix in a closed loop MIMO system. The method includes the following steps:

A. traversing all pre-coding matrices and respectively calculating a Carrier to Interference Noise Ratio (CINR) corresponding to each pre-coding matrix;

B. obtaining a Modulation Coding Scheme (MCS) according to a CINR corresponding to a pre-coding matrix, calculating a spectral efficiency corresponding to the MCS, and selecting a pre-coding matrix with a largest spectral efficiency.

In the method for selecting a pre-coding matrix in a closed loop MIMO system, Step B may include:

B1. mapping CINRs to MCS initial values (MCSinits) according to a CINR-MCSinit mapping relation table, and filtering the MCSinits;

B2. calculating a modification value  $\Delta$ MCS of a filtered MCSinit;

B3. modifying the filtered MCSinit with the modification value  $\Delta$ MCS to obtain an MCS;

B4. calculating a spectral efficiency corresponding to the MCS, selecting the pre-coding matrix with the largest spectral efficiency, converting the MCS into a corresponding Channel Quality Indicator (CQI), and recording a Rank (RI) corresponding to the selected pre-coding matrix.

In the method for selecting a pre-coding matrix in a closed loop MIMO system, the method may further include: after Step B4, reporting a CQI, a Pre-coding Matrix Indicator (PMI) and the RI corresponding to the pre-coding matrix with the largest spectral efficiency.

In the method for selecting a pre-coding matrix in a closed loop MIMO system, in Step B1, the MCSinits may be filtered according to the following way:

if the MCSinits after mapping are the same, then selecting any one of the MCSinits;

if the MCSinits after mapping are different, then the MCSinits are filtered according to the following way:

in the case of a single data stream, selecting an MCSinit which corresponds to a higher CINR;

in the case of double data streams, selecting an MCSinit which corresponds to a higher sum of CINRs, and if the sums of the CINRs corresponding to the MCSinit are equal, then selecting an MCSinit in which there is a smaller difference between corresponding CINRs.

Filtering the MCSinits in Step B1 may further include: in the case that multiple PMI throughputs or multiple spectral efficiencies are the same, selecting an MCSinit with a smaller RI preferentially; if RIs are the same and  $RI=1$ , then selecting an MCSinit with a larger CINR; if RI is larger than 1, then selecting an MCSinit in which there is a smaller difference between CINRs of the two code streams preferentially; and if all CINR differences of the two code streams are the same, then selecting any one of the MCSinits.

In the method for selecting a pre-coding matrix in a closed loop MIMO system, the modification value  $\Delta$ MCS in Step B2 may be obtained according to the following way:

B21. determining an initial value of  $\Delta$ MCS, a maximum value of  $\Delta$ MCS, a minimum value of  $\Delta$ MCS, an upper limit value of Block Error Rate (BLER) and a lower limit value of BLER;

B22. if the BLER is lower than the lower limit value for N consecutive times, then adding 1 to  $\Delta$ MCS, wherein the  $\Delta$ MCS does not exceed the determined maximum value of  $\Delta$ MCS; if the BLER is higher than the upper limit value for M consecutive times, then deducting 1 from  $\Delta$ MCS, wherein

$\Delta$ MCS is not smaller than the determined minimum value of  $\Delta$ MCS; in other cases,  $\Delta$ MCS remains unchanged.

In the method for selecting a pre-coding matrix in a closed loop MIMO system, the modified MCS value in Step B3 may be calculated according to the following way: adding up the  $\Delta$ MCS and the MCS<sub>init</sub>, wherein a range of the MCS is restricted within a range specified in an LTE protocol.

According to another aspect, the present disclosure further discloses a system for selecting a pre-coding matrix in a closed loop MIMO system, including a CINR calculating module and an MCS calculating module, wherein

the CINR calculating module is configured to traverse all pre-coding matrices and respectively calculate a CINR corresponding to each pre-coding matrix;

the MCS calculating module is configured to obtain an MCS according to a CINR corresponding to a pre-coding matrix, calculate a spectral efficiency corresponding to the MCS, and select a pre-coding matrix with a largest spectral efficiency.

In the system for selecting a pre-coding matrix in a closed loop MIMO system which is disclosed by the present disclosure, the MCS calculating module may include a mapping and filtering sub-module, a  $\Delta$ MCS calculating sub-module, a modifying sub-module and a selecting sub-module, wherein

the mapping and filtering sub-module may be configured to, according to a CINR-MCS<sub>init</sub> mapping relation table, map CINRs to MCS initial values (MCS<sub>inits</sub>) and filter the MCS<sub>inits</sub>;

the  $\Delta$ MCS calculating sub-module may be configured to calculate a modification value  $\Delta$ MCS of a filtered MCS<sub>init</sub>;

the modifying sub-module may be configured to modify the filtered MCS<sub>init</sub> with  $\Delta$ MCS to obtain an MCS;

the selecting sub-module may be configured to calculate a spectral efficiency corresponding to the MCS, select the pre-coding matrix with the largest spectral efficiency, convert the MCS into a corresponding Channel Quality Indicator (CQI), and record a Rank (RI) corresponding to the selected pre-coding matrix.

In the system for selecting a pre-coding matrix in a closed loop MIMO system which is disclosed by the present disclosure, the MCS calculating module may further include a reporting sub-module configured to report a CQI, a PMI and the RI corresponding to the pre-coding matrix with the largest spectral efficiency.

In the system for selecting a pre-coding matrix in a closed loop MIMO system which is disclosed by the present disclosure, the mapping and filtering sub-module may be further configured to: if the MCS<sub>inits</sub> after mapping are the same, select any one of the MCS<sub>inits</sub>; and

further configured to: if the MCS<sub>inits</sub> after mapping are different, in the case of a single data stream, select an MCS<sub>init</sub> which corresponds to a higher CINR, while in the case of double data streams, select an MCS<sub>init</sub> which corresponds to a higher sum of CINRs, and if the sums of the CINRs corresponding to the MCS<sub>init</sub> are equal, select an MCS<sub>init</sub> in which there is a smaller difference between corresponding CINRs.

The mapping and filtering sub-module may be further configured to: in the case that multiple PMI throughputs or multiple spectral efficiencies are the same, select an MCS<sub>init</sub> with a smaller RI preferentially; if RIs are the same and RI=1, select an MCS<sub>init</sub> with a larger CINR; if RI is larger than 1, select an MCS<sub>init</sub> in which there is a smaller difference between CINRs of the two code streams preferentially; and if all CINR differences of the two code streams are the same, select any one of the MCS<sub>inits</sub>.

The modifying sub-module may be further configured to: determine an initial value of  $\Delta$ MCS, a maximum value of  $\Delta$ MCS, a minimum value of  $\Delta$ MCS, an upper limit value of Block Error Rate (BLER) and a lower limit value of BLER;

if the BLER is lower than the lower limit value for N consecutive times, add 1 to  $\Delta$ MCS and  $\Delta$ MCS does not exceed the determined maximum value of  $\Delta$ MCS; if the BLER is higher than the upper limit value for M consecutive times, deduct 1 from  $\Delta$ MCS and  $\Delta$ MCS is not smaller than the determined minimum value of  $\Delta$ MCS; in other cases,  $\Delta$ MCS remains unchanged.

Compared with existing technologies, the present disclosure has the following advantageous effects:

The present disclosure calculates a CINR of a pre-coding matrix to obtain an MCS, and then calculates a corresponding spectral efficiency so as to select an appropriate pre-coding matrix. By using the pre-coding matrix in the closed loop multi-input multi-output system, the channel quality, the throughput of a closed loop multiplexing system in the scenario that the channel changes slowly, and the gain can be improved. Besides, the method of the present disclosure can avoid calculation of the BER formula on the premise of a large number of assumptions, and reduce the computation complexity.

#### BRIEF DESCRIPTION OF THE DRAWINGS

FIG. 1 exemplarily illustrates a flowchart of selecting a pre-coding matrix in the present disclosure; and

FIG. 2 exemplarily illustrates a system diagram of the present disclosure.

#### DETAILED DESCRIPTION

The present disclosure is further described in details below with reference to the accompanying drawings and embodiments.

The present disclosure discloses a method for selecting a pre-coding matrix in a closed loop MIMO system, including the following steps:

A. traversing all pre-coding matrices and respectively calculating their corresponding Carrier to Interference Noise Ratios (CINRs);

B. obtaining a Modulation Coding Scheme (MCS) according to a CINR corresponding a pre-coding matrix, calculating a spectral efficiency corresponding to the MCS, and selecting a pre-coding matrix with a largest spectral efficiency.

As shown in FIG. 1, there are two code streams in a dual-input dual-output closed loop MIMO system according to an embodiment of the present disclosure, and a method for selecting a pre-coding matrix includes the following steps:

Step 101: traversing all pre-coding matrices and respectively calculate their corresponding CINRs.

For closed-loop spatial multiplexing with rank (number of layers) of R, the formula for calculating the CINR of the  $i^{th}$  ( $i=1 \dots R$ ) layer is described as follows:

$$CINR_i = \frac{|(GHW)_{ij}|^2}{\sum_{j \neq i} |(GHW)_{ij}|^2 + \sigma^2 \sum |(C)_{ij}|^2}$$

where  $G=(W^H H^H H W + R_n)^{-1} W^H H^H$  for a MMSE (Minimum Mean Squared Error) receiver;

H represents a channel matrix and is obtained via channel estimation;

W is a pre-coding matrix and is obtained from a codebook in Table 1 which shows the pre-coding matrices:

TABLE 1

Codebook index	Number of layers v	
	1	2
0	$\frac{1}{\sqrt{2}} \begin{bmatrix} 1 \\ 1 \end{bmatrix}$	$\frac{1}{\sqrt{2}} \begin{bmatrix} 1 & 0 \\ 0 & 1 \end{bmatrix}$
1	$\frac{1}{\sqrt{2}} \begin{bmatrix} 1 \\ -1 \end{bmatrix}$	$\frac{1}{\sqrt{2}} \begin{bmatrix} 1 & 1 \\ 1 & -1 \end{bmatrix}$
2	$\frac{1}{\sqrt{2}} \begin{bmatrix} 1 \\ j \end{bmatrix}$	$\frac{1}{\sqrt{2}} \begin{bmatrix} 1 & 1 \\ j & -j \end{bmatrix}$
3	$\frac{1}{\sqrt{2}} \begin{bmatrix} 1 \\ -j \end{bmatrix}$	—

$\sigma^2$  is a constant value which can be obtained by a noise variance; and

$R_n$  is a diagonal matrix formed by the noise variance.

In the case of a single code stream, CINR0, CINR1, CINR2 and CINR3 are respectively obtained through a pre-coding matrix whose number of layers is 1. In the case of double code streams, CINR11 and CINR12 of code stream 1, and CINR21 and CINR22 of code stream 2 are respectively obtained through a pre-coding matrix whose number of layers is 2. It is specified in an LTE protocol that the codebook numbered 0 is in a pre-coding matrix whose number of layers is 2 cannot be used in a closed loop, thus the codebook numbering 0 does not take part in CINR calculation.

Step 102: according to a CINR-MCSinit mapping relation table, mapping the CINRs to MCS initial values (MCSinits).

The CINR-MCSinit mapping relation table is as shown in Table 2:

TABLE 2

MCSinit (i)	CINR
0	CINR<CINR_MCS0
1	CINR_MCS0=<CINR<CINR_MCS1
2	CINR_MCS1=<CINR<CINR_MCS2
3	CINR_MCS2=<CINR<CINR_MCS3
4	CINR_MCS3=<CINR<CINR_MCS4
5	CINR_MCS4=<CINR<CINR_MCS5
6	CINR_MCS5=<CINR<CINR_MCS6
7	CINR_MCS6=<CINR<CINR_MCS7
8	CINR_MCS7=<CINR<CINR_MCS8
9	CINR_MCS8=<CINR<CINR_MCS9
10	CINR_MCS9=<CINR<CINR_MCS10
11	CINR_MCS10=<CINR<CINR_MCS11
12	CINR_MCS11=<CINR<CINR_MCS12
13	CINR_MCS12=<CINR<CINR_MCS13
14	CINR_MCS13=<CINR<CINR_MCS14
15	CINR_MCS14=<CINR<CINR_MCS15
16	CINR_MCS15=<CINR<CINR_MCS16
17	CINR_MCS16=<CINR<CINR_MCS17
18	CINR_MCS17=<CINR<CINR_MCS18
19	CINR_MCS18=<CINR<CINR_MCS19
20	CINR_MCS19=<CINR<CINR_MCS20
21	CINR_MCS20=<CINR<CINR_MCS21
22	CINR_MCS21=<CINR<CINR_MCS22
23	CINR_MCS22=<CINR<CINR_MCS23
24	CINR_MCS23=<CINR<CINR_MCS24
25	CINR_MCS24=<CINR<CINR_MCS25
26	CINR_MCS25=<CINR<CINR_MCS26
27	CINR_MCS26=<CINR<CINR_MCS27
28	CINR_MCS27=<CINR

(i=0, 1, . . . , 27) are CINRs with a Block Error Ratio (BLER) of 10%, which are obtained via simulation on a BLER curve under 28 MCSs of an Additive white Gaussian noise (AWGN) channel.

MCS initial values of MCSinit0, MCSinit1, MCSinit2 and MCSinit3 corresponding to the case of a single code stream can be obtained from Table 2; and

MCS initial values of {MCSinit11 MCSinit12} and {MCSinit21 MCSinit22} corresponding to the case of double code streams can be obtained from Table 2.

Step 103: filtering the MCSinits.

The filtering is performed according to the following way: if the MCSinits after mapping are the same, then selecting any one of the MCSinits;

if the MCSinits after mapping are different, then the MCSinits are filtered according to the following way:

in the case of a single data stream, selecting an MCSinit which corresponds to a higher CINR;

in the case of double data streams, selecting an MCSinit which corresponds to a higher sum of CINRs, and if the sums of the CINRs are equal, then selecting an MCSinit in which there is a smaller difference between corresponding CINRs.

In addition, in the case that multiple PMI throughputs or multiple spectral efficiencies are the same, an MCSinit with a smaller RI is preferentially selected; if the RIs are the same and RI=1, then an MCSinit with a larger CINR is selected; if RI is larger than 1, then an MCSinit in which there is a smaller difference between CINRs of two code streams is preferentially selected; and if all CINR differences of two code streams are the same, then any one of the MCSinits is selected.

In the present embodiment, there are 6 groups of MCSinits, which are MCSinit0, MCSinit1, MCSinit2, MCSinit3, {MCSinit11, MCSinit12}, and {MCSinit21, MCSinit22}, respectively. First, a largest MCSinit is selected from the single code stream and is recorded as MCS1. Then a largest MCSinit is selected from the double code streams: if the two groups of data, {MCSinit11, MCSinit12}, and {MCSinit21, MCSinit22}, are the same, either one is selected; if they are different, the sums of their corresponding CINRs are compared, i.e. after comparing CINR11+CINR12 and CINR21+CINR22, the group with a larger sum is selected; if CINR11+CINR12 is equal to CINR21+CINR22, the group in which there is a smaller difference between the CINRs is selected and recorded as MCS2. To facilitate description, it is assumed that the MCSinits obtained through the filtering are {MCSinit11, MCSinit12}. The spectral efficiency corresponding to MCS1 is compared with the sum of the spectral efficiencies corresponding to the two code streams of MCS2. If the spectral efficiency corresponding to MCS1 is larger than that corresponding to MCS2, then RI=1; otherwise, RI=2.

In the present embodiment, to facilitate description, it is assumed that the MCSinits obtained through the filtering are {MCSinit11, MCSinit12}.

Step 104: determining an initial value of ΔMCS, a maximum value of ΔMCS, a minimum value of ΔMCS, an upper limit value of BLER and a lower limit value of BLER.

The initial value of ΔMCS is 0.

The maximum value of ΔMCS, the minimum value of ΔMCS, the upper limit value of BLER and the lower limit value of BLER are obtained according to experience.

Step 105: if the BLER is lower than the lower limit value for N consecutive times, then 1 is added to ΔMCS but ΔMCS should not exceed the determined maximum value of ΔMCS; if the BLER is higher than the upper limit value for M consecutive times, then 1 is deducted from ΔMCS but ΔMCS

should not be smaller than the determined minimum value of  $\Delta\text{MCS}$ ; in other cases,  $\Delta\text{MCS}$  remains unchanged.

The times  $N$  can be determined based on an empirical value.

**Step 106:** adding up  $\Delta\text{MCS}$  and the  $\text{MCS}_{\text{init}}$  to obtain a modified MCS, wherein the range of the MCS is restricted within a range specified in an LTE protocol.

**Step 107:** calculating a spectral efficiency corresponding to the MCS, selecting a pre-coding matrix with a largest spectral efficiency, converting the MCS into a Channel Quality Indicator (CQI), and recording an RI corresponding to the selected pre-coding matrix.

The spectral efficiency is an effective number of bits transmitted on each subcarrier.

**Step 108:** reporting a CQI and a PMI corresponding to the selected pre-coding matrix and an RI of the channel matrix.

There is a mapping relation between the CQI and the MCS, and different frame configurations will result in different mapping values.

Under the same modulation mode, the greater the MCS, the spectral efficiency and the CQI are, the better the channel quality is, the larger the system throughput is and the larger the gain is.

As shown in FIG. 2, in an embodiment of a system for selecting a pre-coding matrix in a closed loop MIMO system according to the present disclosure, a CINR calculating module and an MCS calculating module are included. The CINR calculating module is configured to traverse all pre-coding matrices and respectively calculate CINRs corresponding to all the pre-coding matrices. The MCS calculating module is configured to obtain an MCS according to a CINR corresponding to a pre-coding matrix, calculate a spectral efficiency corresponding to the MCS, and select a pre-coding matrix with a largest spectral efficiency.

In an embodiment of the system for selecting a pre-coding matrix in the closed loop MIMO system of the present disclosure, the MCS calculating module includes a mapping and filtering sub-module, a  $\Delta\text{MCS}$  calculating sub-module, a modifying sub-module and a selecting sub-module. The mapping and filtering sub-module is configured to, according to a CINR-MCS<sub>init</sub> mapping relation table, map CINRs to MCS<sub>init</sub>s and filter the MCS<sub>init</sub>s. The  $\Delta\text{MCS}$  calculating sub-module is configured to calculate a modification value  $\Delta\text{MCS}$  of a selected MCS<sub>init</sub>. The modifying sub-module is configured to modify the filtered MCS<sub>init</sub> with the modification value  $\Delta\text{MCS}$  to obtain an MCS. The selecting sub-module is configured to calculate a spectral efficiency corresponding to the MCS and select the pre-coding matrix with the largest spectral efficiency.

In an embodiment of the system for selecting a pre-coding matrix in the closed loop MIMO system of the present disclosure, a reporting sub-module is further included and configured to report a CQI, a PMI and an RI corresponding to the pre-coding matrix with the largest spectral efficiency.

In an embodiment of the system for selecting a pre-coding matrix in the closed loop MIMO system of the present disclosure, the mapping and filtering sub-module is further configured to: if the MCS<sub>init</sub>s after mapping are the same, select any one of the MCS<sub>init</sub>s; and if the MCS<sub>init</sub>s after mapping are different, in the case of a single data stream, select an MCS<sub>init</sub> which corresponds to a higher CINR, while in the case of double data streams, select an MCS<sub>init</sub> which corresponds to a higher sum of CINRs, and if the sums of the CINRs corresponding to the MCS<sub>init</sub> are equal, select an MCS<sub>init</sub> in which there is a smaller difference between corresponding CINRs.

The present disclosure calculates a CINR of a pre-coding matrix to obtain an MCS, and then calculates a corresponding spectral efficiency so as to select an appropriate pre-coding matrix. By using the pre-coding matrix in the closed loop multi-input multi-output system, the channel quality, the throughput of a closed loop multiplexing system in the scenario that the channel changes slowly, and the gain can be improved. Besides, the method of the present disclosure can avoid calculation of the BER formula on the premise of a large number of assumptions, and reduce the computation complexity. The present disclosure obtains a CQI and an RI when obtaining the pre-coding matrix, thus saving system resources.

The contents above are further detailed descriptions for the present disclosure in combination with the preferred embodiments, which are only examples to facilitate understanding and it should not be considered that specific implementation of the present disclosure is limited by these descriptions. For those of ordinary skill in the art, there may be various possible equivalent changes or replacements without departing from the conception of the present disclosure, and these changes or replacements shall belong to the protection scope of the present disclosure.

The invention claimed is:

1. A method for selecting a pre-coding matrix in a closed loop Multi-Input Multi-Output (MIMO) system, comprising
  - (A) traversing all pre-coding matrices and respectively calculating a Carrier to Interference Noise Ratio (CINR) corresponding to each pre-coding matrix;
  - (B) obtaining a Modulation Coding Scheme (MCS) according to a CINR corresponding to a pre-coding matrix, calculating a spectral efficiency corresponding to the MCS, and selecting a pre-coding matrix with a largest spectral efficiency,
    - wherein the Step B comprises:
      - (B1) mapping CINRs to MCS initial values (MCS<sub>init</sub>s) according to a CINR-MCS<sub>init</sub> mapping relation table, and filtering the MCS<sub>init</sub>s;
      - (B2) calculating a modification value  $\Delta\text{MCS}$  of a filtered MCS<sub>init</sub>;
      - (B3) modifying the filtered MCS<sub>init</sub> with the modification value  $\Delta\text{MCS}$  to obtain the MCS;
      - (B4) calculating the spectral efficiency corresponding to the MCS, selecting the pre-coding matrix with the largest spectral efficiency, converting the MCS into a corresponding Channel Quality Indicator (CQI), and recording a Rank (RI) corresponding to the selected pre-coding matrix.
2. The method according to claim 1, further comprising: after the Step B4, reporting the CQI, a Pre-coding Matrix Indicator (PMI) and the RI corresponding to the pre-coding matrix with the largest spectral efficiency.
3. The method according to claim 2, wherein in the Step B1, the MCS<sub>init</sub>s are filtered according to the following way:
  - if the MCS<sub>init</sub>s after mapping are the same, then selecting any one of the MCS<sub>init</sub>s;
  - if the MCS<sub>init</sub>s after mapping are different, then the MCS<sub>init</sub>s are filtered according to the following way:
    - in the case of a single data stream, selecting an MCS<sub>init</sub> which corresponds to a higher CINR;
    - in the case of double data streams, selecting an MCS<sub>init</sub> which corresponds to a higher sum of CINRs, and if the sums of the CINRs corresponding to the MCS<sub>init</sub> are equal, then selecting an MCS<sub>init</sub> in which there is a smaller difference between corresponding CINRs.



4. The method according to claim 3, wherein filtering the MCSinits in the Step B1 further comprises:

in the case that multiple PMI throughputs or multiple spectral efficiencies are the same, selecting an MCSinit with a smaller RI preferentially; if RIs are the same and RI=1, then selecting an MCSinit with a larger CINR; if RI is larger than 1, then selecting an MCSinit in which there is a smaller difference between CINRs of two code streams preferentially; and if all CINR differences of the two code streams are the same, then selecting any one of the MCSinits.

5. The method according to claim 4, wherein the modification value  $\Delta$ MCS in the Step B2 is obtained according to the following way:

(B21) determining an initial value of  $\Delta$ MCS, a maximum value of  $\Delta$ MCS, a minimum value of  $\Delta$ MCS, an upper limit value of Block Error Rate (BLER) and a lower limit value of BLER;

(B22) if the BLER is lower than the lower limit value for N consecutive times, then adding 1 to  $\Delta$ MCS, wherein the  $\Delta$ MCS does not exceed the determined maximum value of  $\Delta$ MCS; if the BLER is higher than the upper limit value for M consecutive times, then deducting 1 from  $\Delta$ MCS, wherein  $\Delta$ MCS is not smaller than the determined minimum value of  $\Delta$ MCS; in other cases,  $\Delta$ MCS remains unchanged,

wherein the N and M are preset integers that represent calculate times.

6. The method according to claim 5, the modified MCS in the Step B3 is calculated according to the following way: adding up the  $\Delta$ MCS and the MCSinit, wherein a range of the MCS is restricted within a range specified in an Long Term Evolution (LTE) protocol.

7. A system for selecting a pre-coding matrix in a closed loop Multi-Input Multi-Output (MIMO) system, comprising: a Carrier to Interference Noise Ratio (CINR) calculating module and a Modulation Coding Scheme (MCS) calculating module, wherein

the CINR calculating module is configured to traverse all pre-coding matrices and respectively calculate a CINR corresponding to each pre-coding matrix;

the MCS calculating module is configured to obtain an MCS according to the CINR corresponding to the pre-coding matrix, calculate a spectral efficiency corresponding to the MCS, and select a pre-coding matrix with a largest spectral efficiency,

wherein the MCS calculating module comprises a mapping and filtering sub-module, a  $\Delta$ MCS calculating sub-module, a modifying sub-module and a selecting sub-module, wherein

the mapping and filtering sub-module is configured to, according to a CINR-MCSinit mapping relation table, map CINRs to MCS initial values (MCSinits) and filter the MCSinits;

the  $\Delta$ MCS calculating sub-module is configured to calculate a modification value  $\Delta$ MCS of a filtered MCSinit; the modifying sub-module is configured to modify the filtered MCSinit with  $\Delta$ MCS to obtain the MCS;

the selecting sub-module is configured to calculate the spectral efficiency corresponding to the MCS, select the pre-coding matrix with the largest spectral efficiency, convert the MCS into a corresponding Channel Quality Indicator (CQI), and record a Rank (RI) corresponding to the selected pre-coding matrix.

8. The system according to claim 7, wherein the MCS calculating module further comprises a reporting sub-module configured to report the CQI, a Pre-coding Matrix Indicator (PMI) and the RI corresponding to the pre-coding matrix with the largest spectral efficiency.

9. The system according to claim 8, wherein the mapping and filtering sub-module is further configured to: if the MCSinits after mapping are the same, select any one of the MCSinits; and

further configured to: if the MCSinits after mapping are different, in the case of a single data stream, select an MCSinit which corresponds to a higher CINR, while in the case of double data streams, select an MCSinit which corresponds to a higher sum of CINRs, and if the sums of the CINRs corresponding to the MCSinit are equal, select an MCSinit in which there is a smaller difference between corresponding CINRs.

10. The system according to claim 9, wherein the mapping and filtering sub-module is further configured to: in the case that multiple PMI throughputs or multiple spectral efficiencies are the same, select an MCSinit with a smaller RI preferentially; if RIs are the same and RI=1, select an MCSinit with a larger CINR; if RI is larger than 1, select an MCSinit in which there is a smaller difference between CINRs of two code streams preferentially; and if all CINR differences of the two code streams are the same, select any one of the MCSinits.

11. The system according to claim 10, wherein the modifying sub-module is further configured to: determine an initial value of  $\Delta$ MCS, a maximum value of  $\Delta$ MCS, a minimum value of  $\Delta$ MCS, an upper limit value of Block Error Rate (BLER) and a lower limit value of BLER;

if the BLER is lower than the lower limit value for N consecutive times, add 1 to  $\Delta$ MCS and  $\Delta$ MCS does not exceed the determined maximum value of  $\Delta$ MCS; if the BLER is higher than the upper limit value for M consecutive times, deduct 1 from  $\Delta$ MCS and  $\Delta$ MCS is not smaller than the determined minimum value of  $\Delta$ MCS; in other cases,  $\Delta$ MCS remains unchanged,

wherein the N and M are preset integers that represent calculate times.

\* \* \* \* \*